

## 变速箱数据存储单元 Transmission Subrom

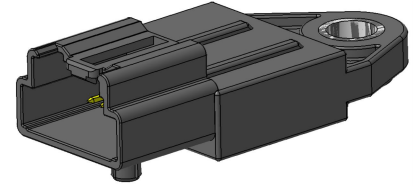
### 产品介绍 Product Description

存储器用于存储读取变速箱的特性数据，最多支持16K数据存储量，主要用于存储变速箱整机下线时的各种数据（比如各阀体机械位置的原始出厂数据），目前该存储器已经批量应用于CVT变速箱等各种类型变速箱。

Transmission Subrom is used to store and read the characteristic data of the gearbox, up to 16K data storage, mainly used to store various data when the gearbox is off the line (such as the original factory data of the mechanical position of each valve body), and the memory has been applied to CVT gearboxes and other types of gearboxes in batches.

### 产品特征及优势 Feature and benefits

- ◆ 机构简单，安装方便  
The mechanism is simple and easy to install
- ◆ 最多支持 16K 数据存储量，百万次数据读写  
Supports up to 16K data storage and millions of data reads and writes
- ◆ 耐变速箱油，耐 150°C高温  
Resistant to transmission oil, resistant to high temperatures of 150°C
- ◆ 可根据客户定制化设计  
Steel ball for vent hole sealing, laser marking for better traceability



变速箱数据存储单元  
Transmission Subrom

### 产品作用 Application

- ◆ 用于存储变速箱整机下线时的各种数据，或者每次上下电读取校验。  
Used to store various data when the gearbox is off the line, or read the calibration every time the power is turned on and off

### 操作 Operation

#### ◆ 基本原理Basic principle:

变速箱数据存储单元可支持16K数据存储量，可存储变速箱各种参数，在需要时读取相关参数。

The transmission data memory can support 16K data storage, which can store various parameters of the gearbox and read the relevant parameters when needed.

#### ◆ 连接选项Connection options:

根据客户选择定制连接系统

Customized to customer choice of connection system

#### ◆ 包装选项 Packaging Options:

可提供定制包装以满足任何需要，请联系KESENS技术部了解详情。

Custom packaging can be provided to meet any need, please contact KESENS Engineering for details.

## 变速箱数据存储器件 Transmission Subrom

### 技术参数 Functional Characteristics

参数 PARAMETER	符号 NOTE	最小值 MIN.	额定值 NOM.	最大值 MAX.	单位 UNITS
工作温度 TEMPERATURE RANGE	T	-40		150	°C
电源电压 SUPPLY VOLTAGE	Vcc	8.5	9	9.5	V
电源电流 SUPPLY CURRENT	Icc		10	15	mA
输出信号类型 OUTPUT SIGNAL TYPE	/	SPI			/
存储空间 STORAGE	/	16			Kbit
高电平输入 HIGH LEVEL INPUT	/	5	9	9.5	V
低电平输入 LOW LEVEL INPUT	/	-0.3	0	2	V
低电平输出 LOW LEVEL OUTPUT	/	/	0	0.4	V
高电平输出 HIGH LEVEL OUTPUT	/	2.4	9	9.5	V
时钟频率 CLOCK FREQUENCY	/	/	10	20	KHz

可根据需要定制电气和环境规范，详情请联系KESENS研发部。

Custom electrical and environmental specifications can be designed to meet any need, please contact KESENS design department for details.